

GCDE

Governor's Committee on
Disability Issues & Employment

WELCOME TO NEW MEMBER ORIENTATION

Governor's Committee on Disability Issues and
Employment

AGENDA (MEGAN & ELAINE)

- ▶ Welcome and Staff Introductions, Housekeeping
- ▶ Member Introductions
- ▶ GCDE History, Mission and Vision
- ▶ GCDE Org Chart, Coordinating Committee
- ▶ Programs and Projects
- ▶ Roles and Responsibilities, Position Descriptions, Member Participation
- ▶ Ethics and Conflicts of Interest
- ▶ Q&A



WELCOME, STAFF INTRODUCTIONS, HOUSEKEEPING (MEGAN & ELAINE)

- ▶ *Damiana Harper, Chair, GCDE*
- ▶ *Megan Mason-Todd, Chair, GCDE
Membership Subcommittee*
- ▶ *Elaine Stefanowicz, GCDE Staff, Program
Coordinator*

NEW MEMBER INTRODUCTIONS (MEGAN & ELAINE)

- ▶ Please include:
 - ▶ Your name
 - ▶ Pronouns, if you are comfortable
 - ▶ A fun fact about yourself



GCDE HISTORY, MISSION AND VISION STATEMENTS (WARREN)

Mission Statement:

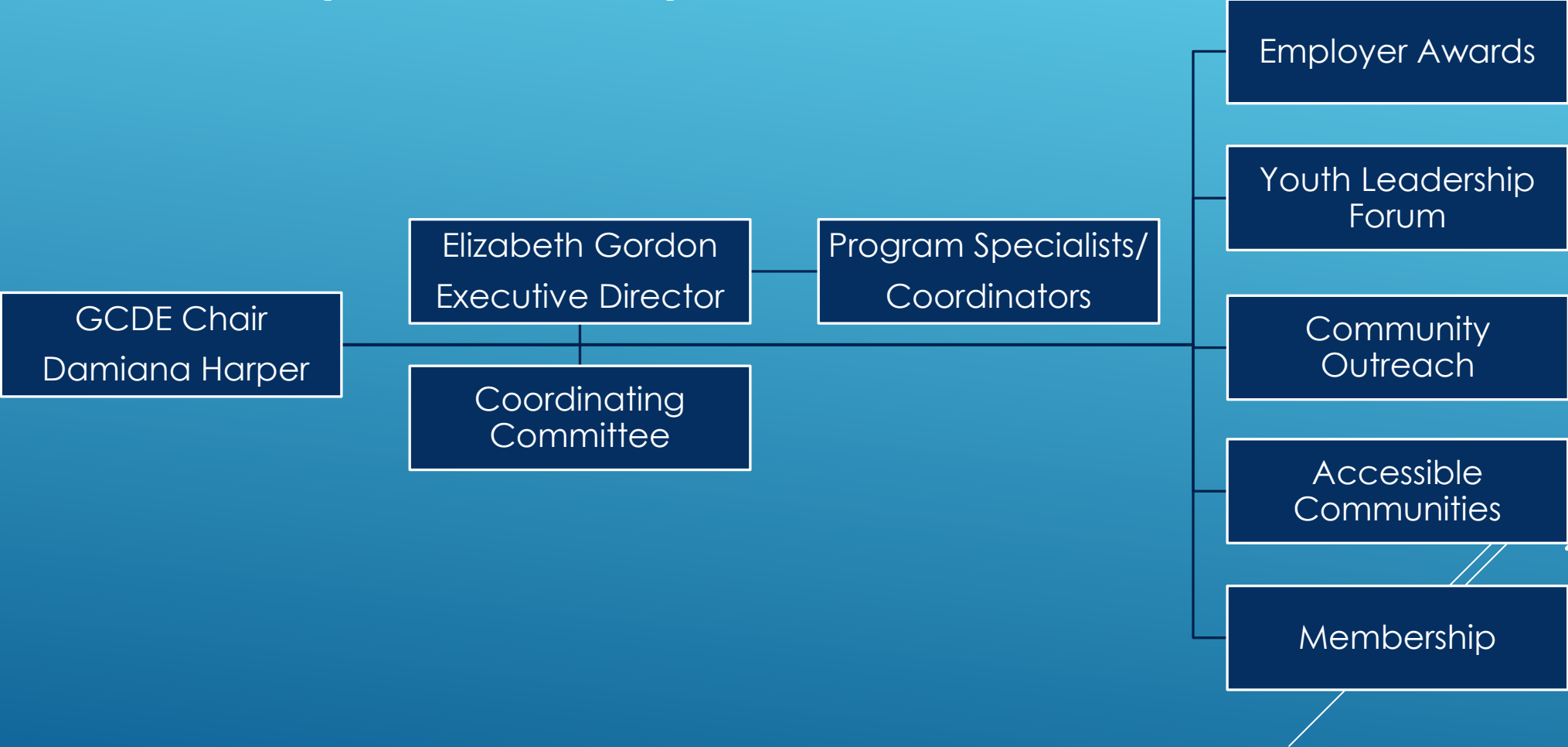
The Governor's Committee on Disability Issues and Employment provides statewide advocacy and leadership to empower the disability community to obtain equality of opportunity and maximum independence.

Vision Statement:

An equitable Washington where people with disabilities experience full inclusion, full participation, and economic vibrance.



GCDE ORG CHART, COORDINATING COMMITTEE (WARREN)



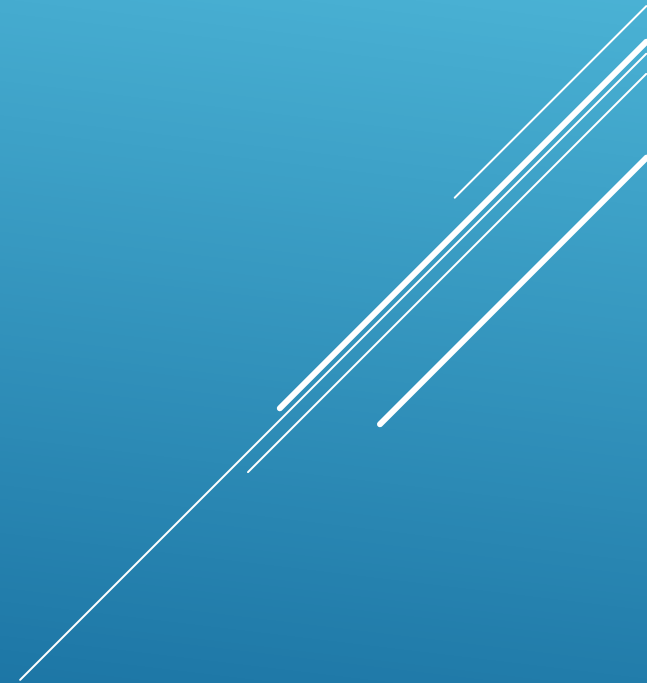
GCDE FUNDING AND BUDGET (WARREN)



PROGRAMS AND PROJECTS (ELAINE)

- ▶ Membership – *Megan Mason-Todd, Chair*
- ▶ Accessible Communities – *Warren Weissman, Chair*
- ▶ Governor's Employer Awards – *Matt Nash, Vice-Chair*
- ▶ Youth Leadership Forum – *Candace Dickson, Chair*
- ▶ Legislative Workgroup – *Kristin DiBiase, Lead*
- ▶ Community Outreach – *Marsha Cutting, Chair*

ROLES AND RESPONSIBILITIES, POSITION DESCRIPTIONS, MEMBER PARTICIPATION (MEGAN)



ETHICS AND CONFLICTS OF INTEREST (MEGAN)



QUESTIONS

