



Career and Technical Education in Washington

Rebecca Wallace, Executive Director
Career and Technical Education

Office of Superintendent of Public Instruction
Chris Reykdal, State Superintendent



Vision:

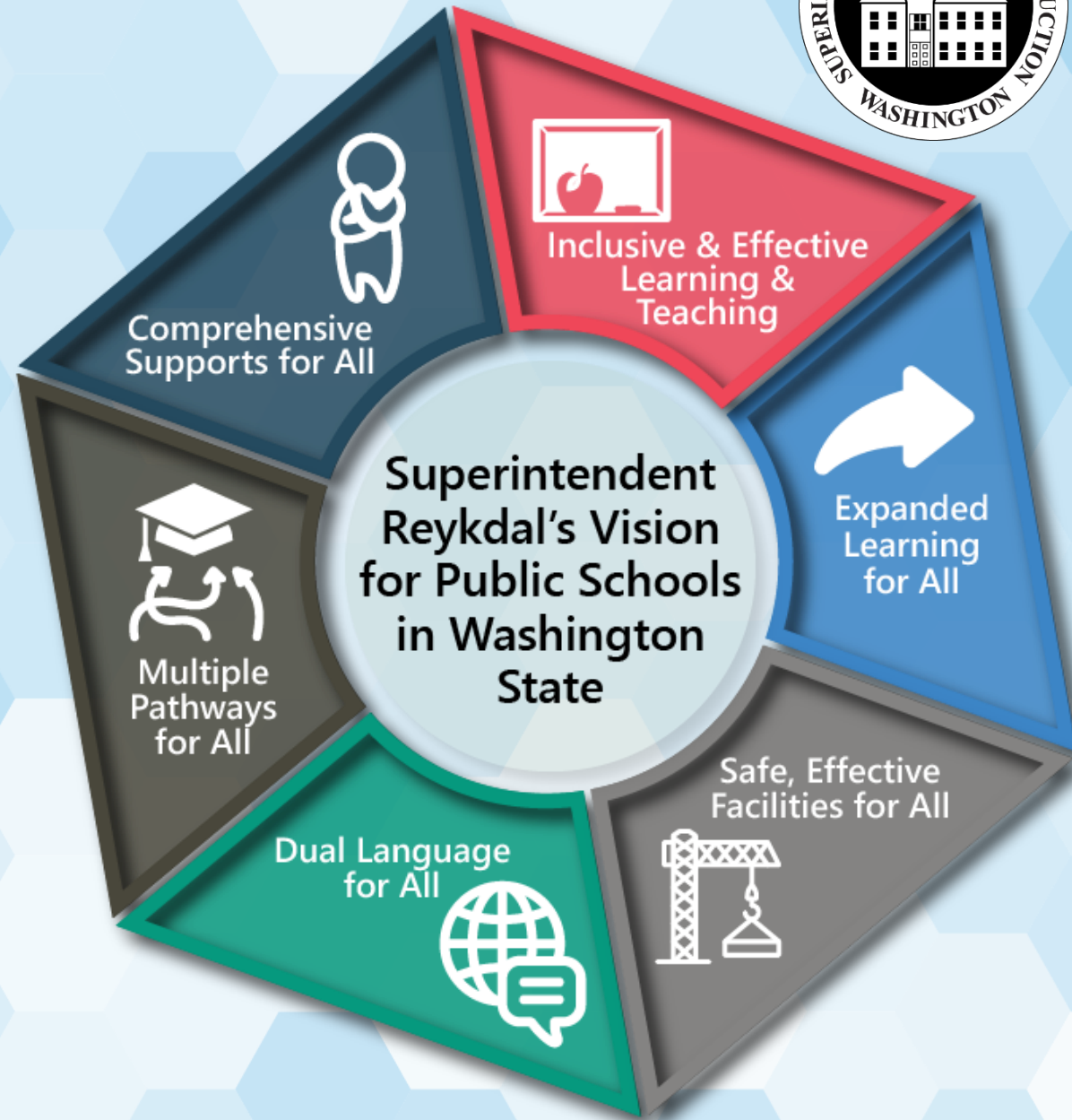
All students prepared for post-secondary pathways, careers, and civic engagement.

Mission:

Transform K–12 education to a system that is centered on **closing opportunity gaps** and is characterized by high expectations for all students and educators. We achieve this by developing equity-based policies and supports that empower educators, families, and communities.

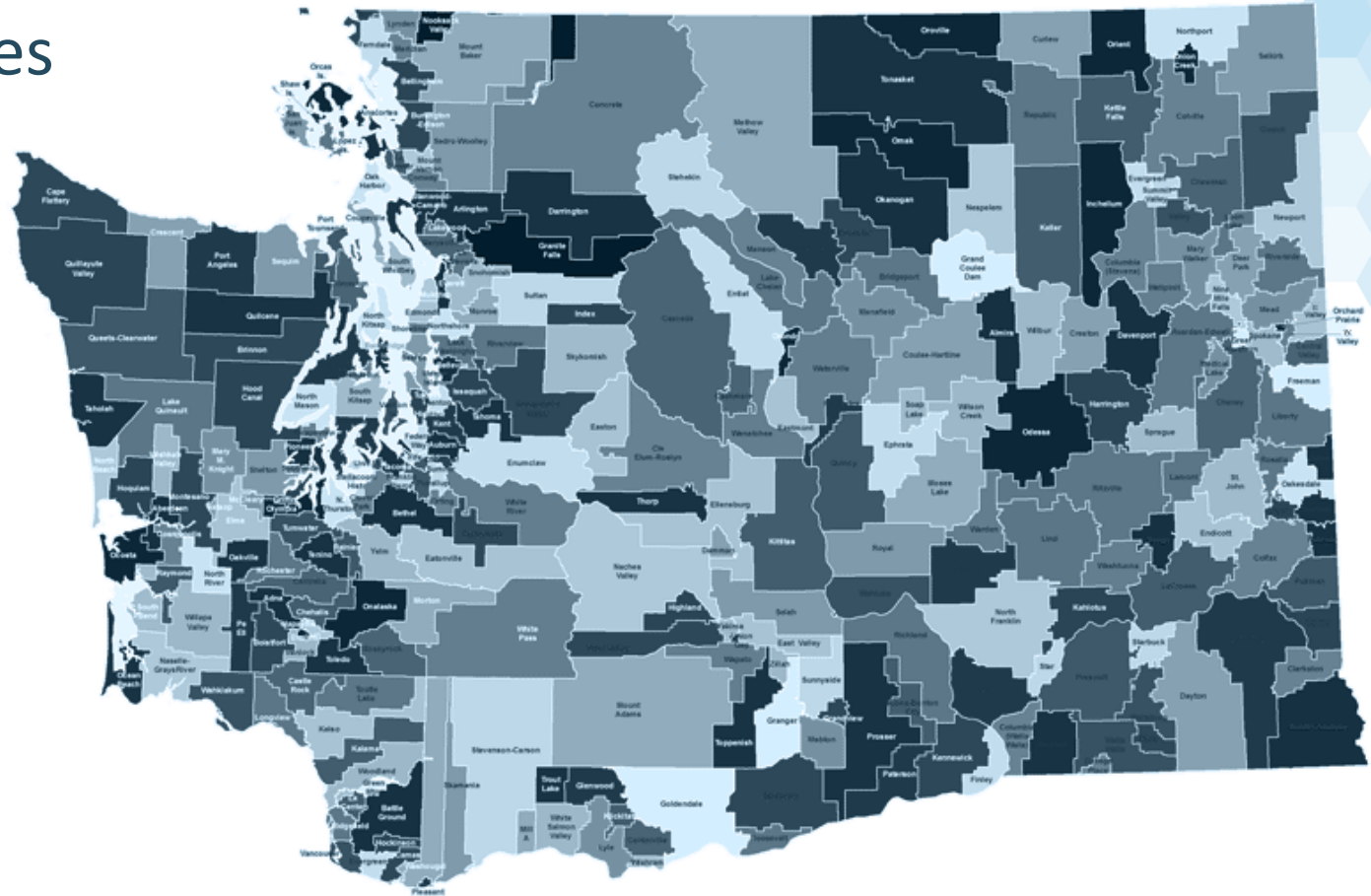
Values:

- Ensuring Equity
- Collaboration and Service
- Achieving Excellence through Continuous Improvement
- Focus on the Whole Child



Washington K-12 system

- 295 school districts
- 10 charter school LEAs
- 7 Tribal Compact Agencies
- 2 state institutional agencies
- 275 districts with high schools
- 245 districts with CTE enrollment
- 14 Core Skill Centers
- 3 Branch Campuses
- Multiple Satellites



Career and Technical Education

Career and Technical Education is a planned program of courses and learning experiences that **begin with the exploration** of career options, supports basic academic and life skills, and enables achievement of high academic standards, leadership, options for high skill, high wage **employment preparation, and advanced and continuing education.**

(RCW 28C.04.100)





CTE Model

Extended Learning: Learning activities which occur beyond the scheduled school day and/or school year under the supervision of a certified CTE instructor

Classroom Instruction/Theory: Represented in CTE course framework; alignment of Washington K12 learning standards, **industry standards, and 21st Century Leadership Skills**

Shop/Laboratory/Practice: Where theory is put into practice; hands-on project based approach to develop **technical and professional** skills.

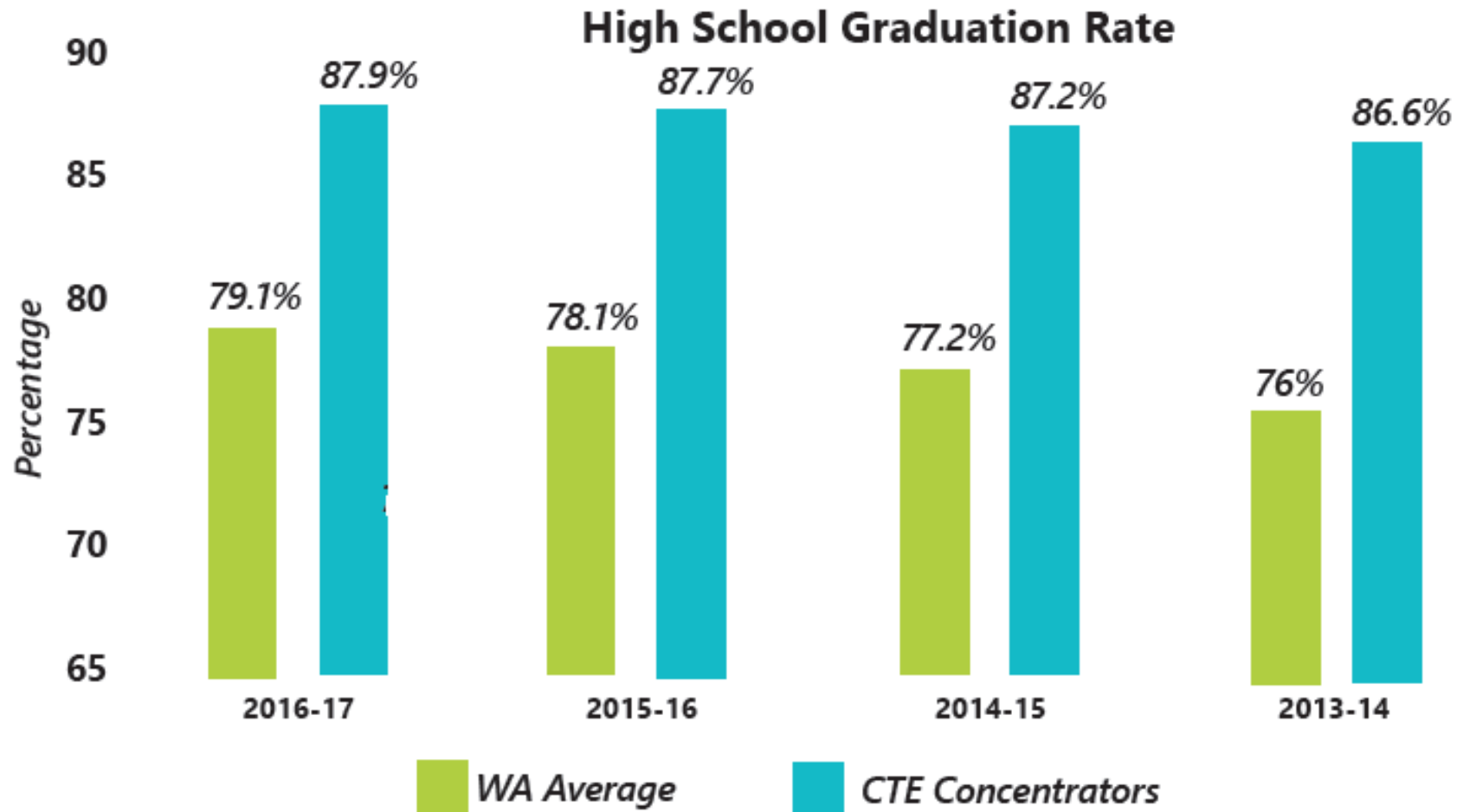
CTSO: Career and Technical Student Organizations for individuals enrolled in CTE programs that engage in CTE leadership and technical skill development activities.



CTE programs require:

- CTE certified instructors
- Active industry based advisory committees
- Annually evaluated district-wide plans
- Compliance to state laws and Carl Perkins Act

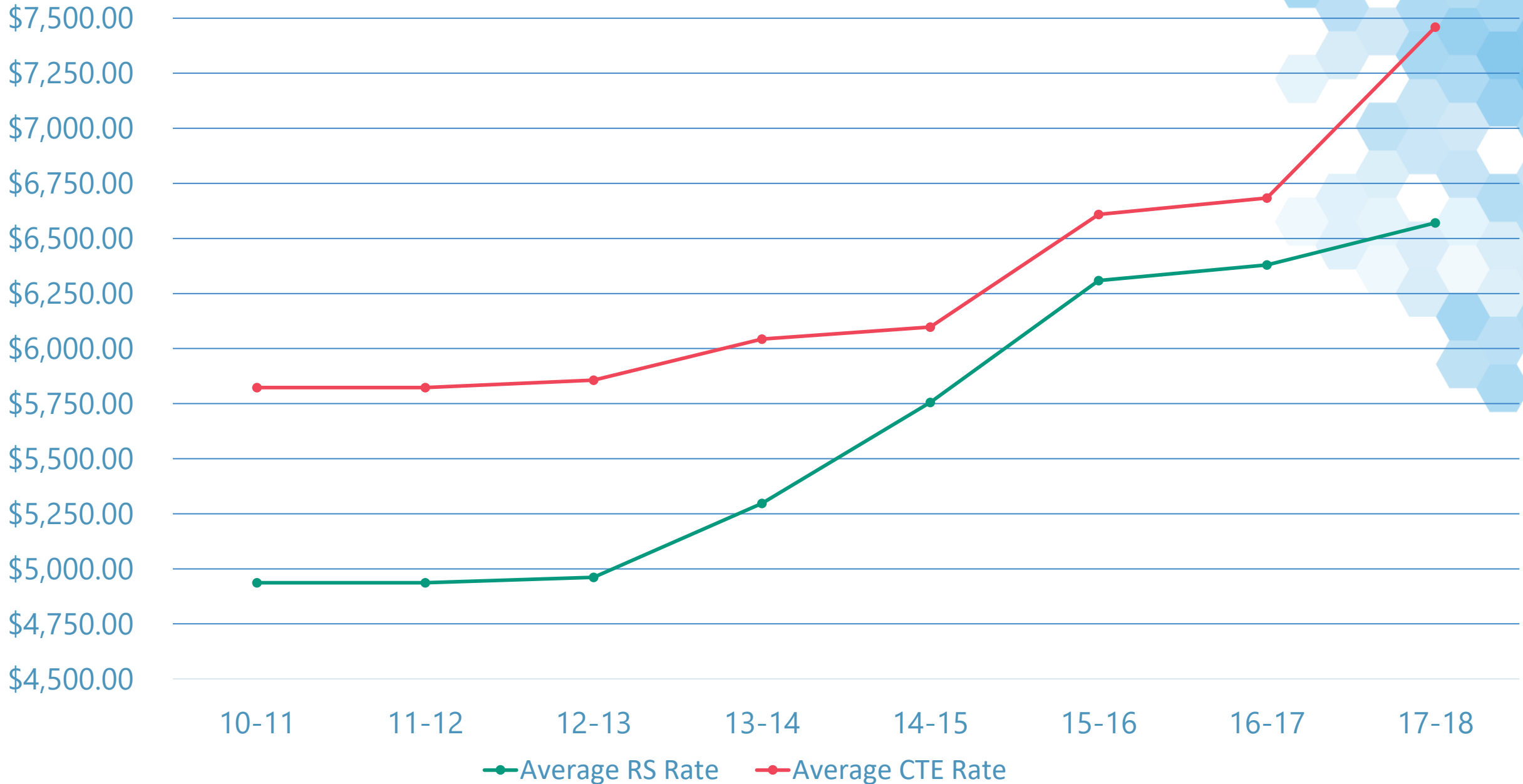




Concentrators are students who have enrolled in two or more CTE courses above the exploratory level in a single cluster; this requires completion of two courses that are designated as preparatory.



Statewide Average Investment



CTE at a glance

- State CTE standards, requirements, and approval processes
- 332,026 students enrolled in CTE courses in 17-18
 - 176 SD reported MS Enrollment, (372 MS)
 - 244 SD reported 9-12 Enrollment, (436 HS)
- 78 designated Programs of Study in existing pathways
- 3,382 students in cooperative worksite learning placement
- 44,158 students members of Career and Technical Student Organizations
- \$3,284,446 Dollars earned by students through Supervised Agricultural Experience



Healthcare Pathway Example

High School Experience

Equivalency Credit: Student earns science credit through A&P state equivalency framework

Dual Credit: College credit through Human Health & Disease or Medical Terminology Articulation

Certificate(s); Home Care Aide, Certified Nursing Assistant, Blood Borne Pathogen, Anatomy & Physiology Precision Exam

Work-ready Experience: Instructional work-site learning clinical hours, student competitions such as Health Occupation Student Association: Medical Terminology, Clinical Nursing, Nursing Assistant

Post-Secondary Opportunities:

Military Service: Medical Assistant, LPN and LVN, Critical Care Nurse

Community and Technical Colleges: Associate's Degree, transfer for RN – Licensed Practical Nurse (LPN)

Apprenticeship: Medical Assistant

Four-Year University+: Bachelor's Degree in Nursing (BSN), Master of Nursing (RN) PhD in Nursing

Direct Employment: Home Care Aide, Certified Nurse Assistant



Aerospace Manufacturing Pathway Example



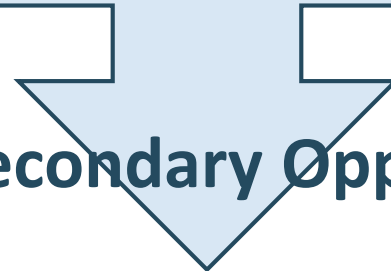
High School Experience

Equivalency Credit: Student earns math, science, ELA credit through Core Plus state equivalency framework

Dual Credit: Student earns up to 40 college credits after completing the Aviation Entry Exam

Certificate(s): Core Plus Certificate, OSHA 10, and/or Forklift Operator Certificate

Work-ready Experience: Student summer internship, employment with suppliers, SkillsUSA competitions (Aircraft Maintenance and Aircraft Assembly), Youth Apprenticeship



Post-Secondary Opportunities

Military Service: Aircraft mechanics and Service, Machinist

Community and Technical Colleges: Aviation Maintenance Technology, Airframe/Powerplant license

Apprenticeship: Aerospace and Advanced Manufacturing Apprentice

Four-Year University+: Bachelor's Degree in Aerospace Manufacturing, MS Mechanical Engineering

Direct Employment: Aerospace assembler, Aerospace electrical, Flight line repair and modification



Hot Topics

- High Demand
- Perkins V impact on Programs of Study
- Advisory Committee
- Continual collaboration with SBCTC
- Career and Technical Student Organizations
- Dynamic work-based learning, work-integrated learning, apprenticeships and career-connected learning opportunities
- Preparing students for their future
- Multiple Pathways



Contact:

Rebecca Wallace

(360) 725-6243

rebecca.wallace@k12.wa.us

